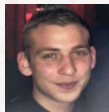
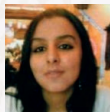
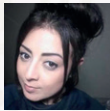
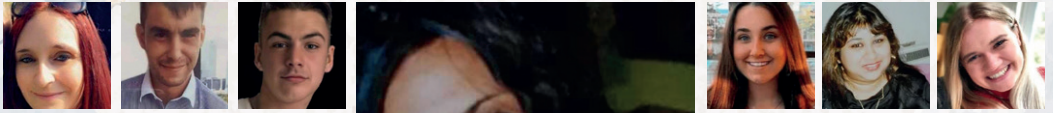


the table of Love and Loss



SUNDAY

DECEMBER

03

2023

1PM - 4.30PM

EAST HAM TOWN HALL, 328 BARKING ROAD,
LONDON E6 2RP

FREE PUBLIC EVENT

WE ARE NEWHAM.

In a heartfelt tribute to her cousin, Jan Mustafa, who tragically lost her life in Newham, Ayse Hussein has established “Jan’s Legacy” to support and raise awareness.

The “Table Of Love & Loss” event aims to bring together people of all ages from the community, as well as friends and families, to offer support to those who are missing a family member or have endured the painful loss of a loved one due to tragic circumstances.

We invite you to join us for this informative day. You’ll have the opportunity to meet friends and families who have experienced the loss of loved ones. At the event, you can seek support and guidance from specialist organisations, explore stalls, enjoy refreshments, partake in child-friendly activities, and find solace in a serene space facilitated by counsellors and mental health professionals.

This event will feature the participation of various organisations dedicated to providing support in several critical areas, including domestic abuse, mental health, suicide prevention, honor-based abuse, stalking, homicide, road rage, knife crime, substance misuse, assistance for missing persons, support for bereaved families, modern slavery and forced marriage.

Among the attendees on the day, you can expect representatives from the London Probation Victim Contact Scheme, Metropolitan Police, counsellors and media.

Our distinguished guest speakers include:

Host: ANJUM MOUJ, London Black Women’s Project

ROKHSANA FIAZ OBE, Mayor of Newham

ISLA EDWARDS, Detective Sergeant, MPS Specialist Crime South

CLAIRE WAXMAN, OBE independent Victims’ Commissioner for London

LEJLA DAUTI, Founder & Director of Lejla Please Tell My Story

QUINTON MILISÉ, Professional Youth Mentor and Spoken Word Artist

Families who have experienced the loss of loved ones will also share their heartfelt stories.

To ensure inclusivity, we will have BSL (British Sign Language) interpreters present at the event.

Please be aware that filming and photography will take place.

For travel information, the nearest tube station is East Ham on the District Line, and free parking is available.

For additional information, please contact Ayse on **07958 475212** or scan the QR code for the Facebook event. Your presence and support is deeply appreciated as we come together to remember Jan’s Legacy and support those in need.



JAN'S LEGACY



MAKING
HERSTORY

WE ARE NEWHAM.